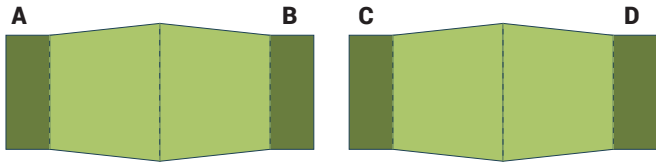
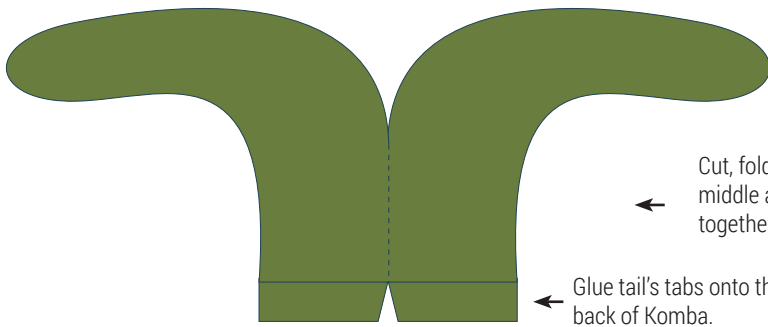


1. Cut out the right arm. Then fold here. Do the same with left arm.

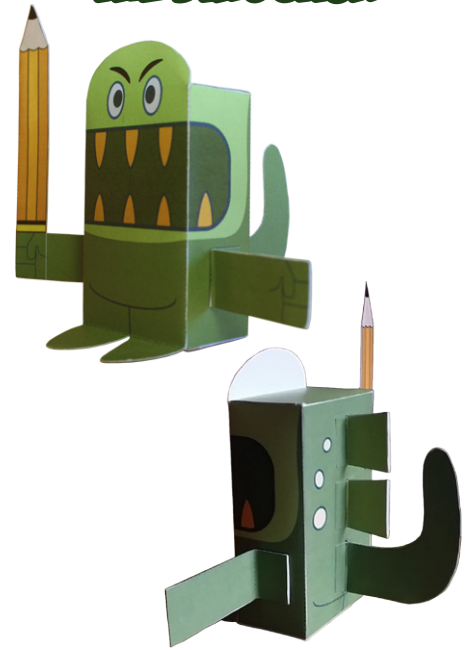


2. Once glued, fold here. Do the same with left arm.



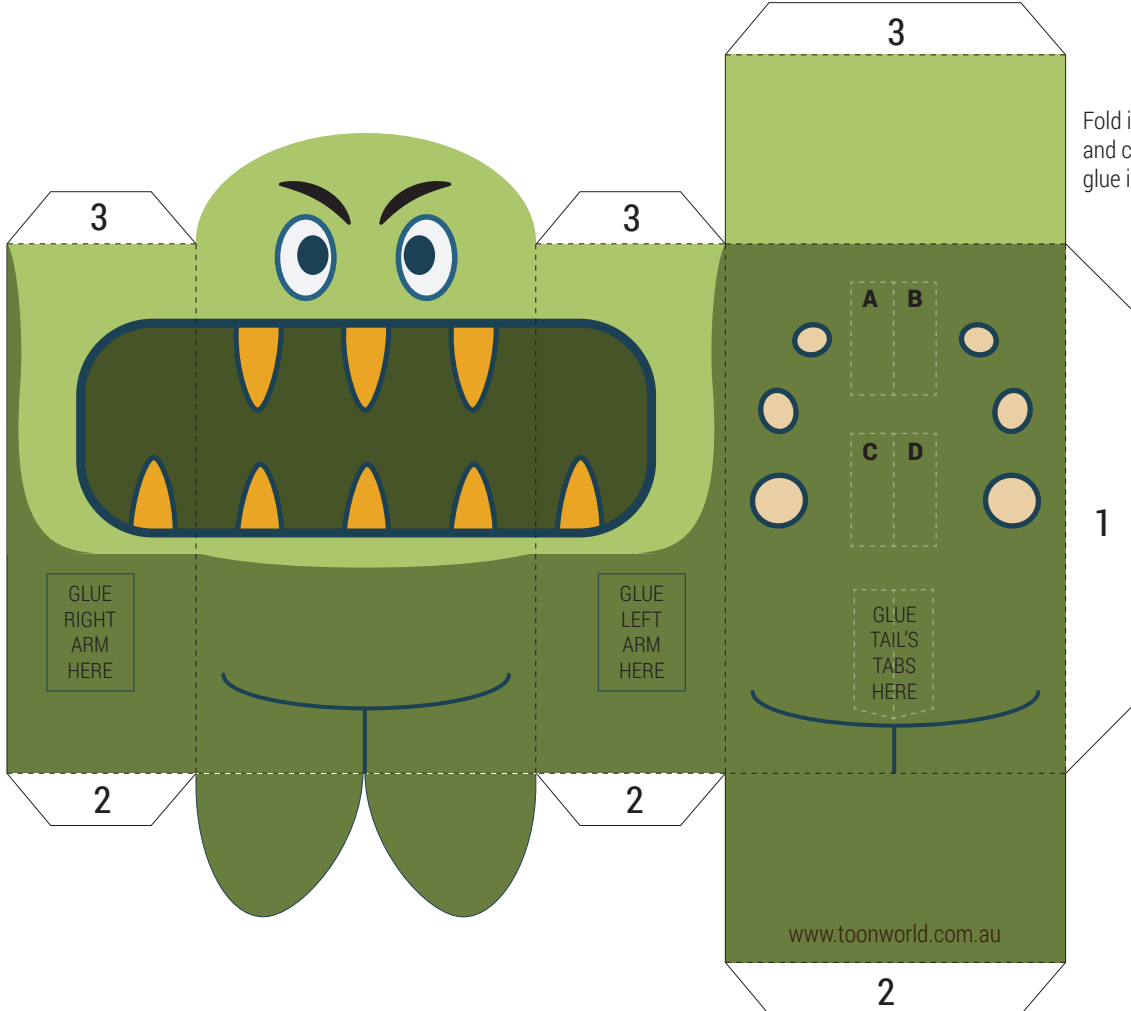
Cut, fold in the middle, then glue it together.  
 Fold Tabs A,B,C,D outward and glue them onto the back of Komba

# KOMBA THE DINOSAUR

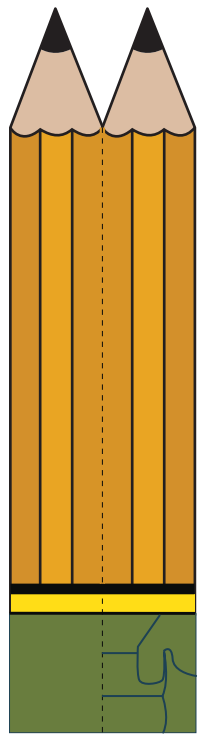


## INSTRUCTIONS

- Print Template on thick paper or card.
- Use scissors to cut-out along solid colour lines.
- Cut first the sections indicated with the scissors symbol.
- Fold along dashed lines.
- Glue folded tabs to insides. Glue tabs in order.



Fold in the middle and cut. Then glue it together.



Sword of Destiny

